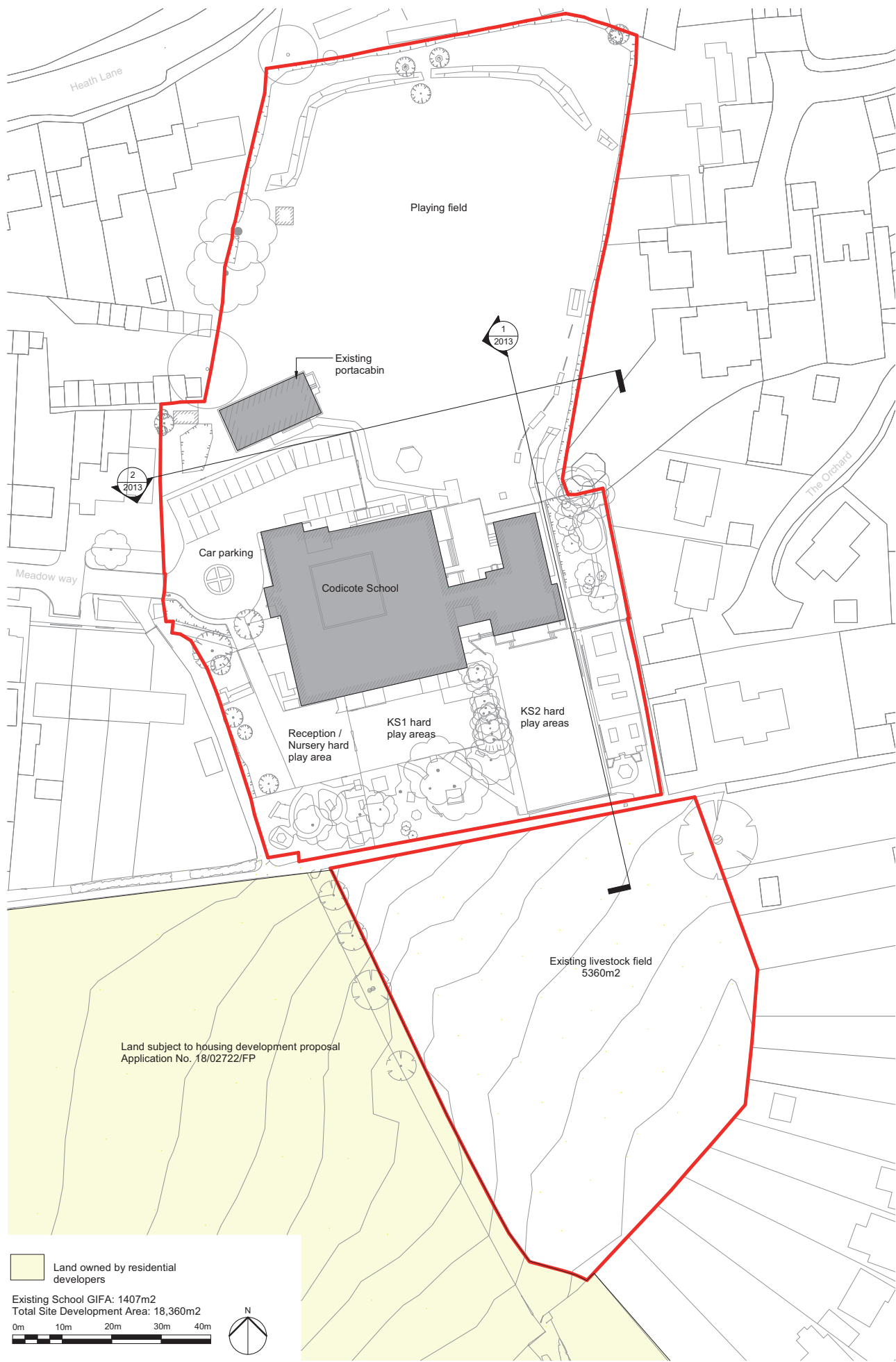
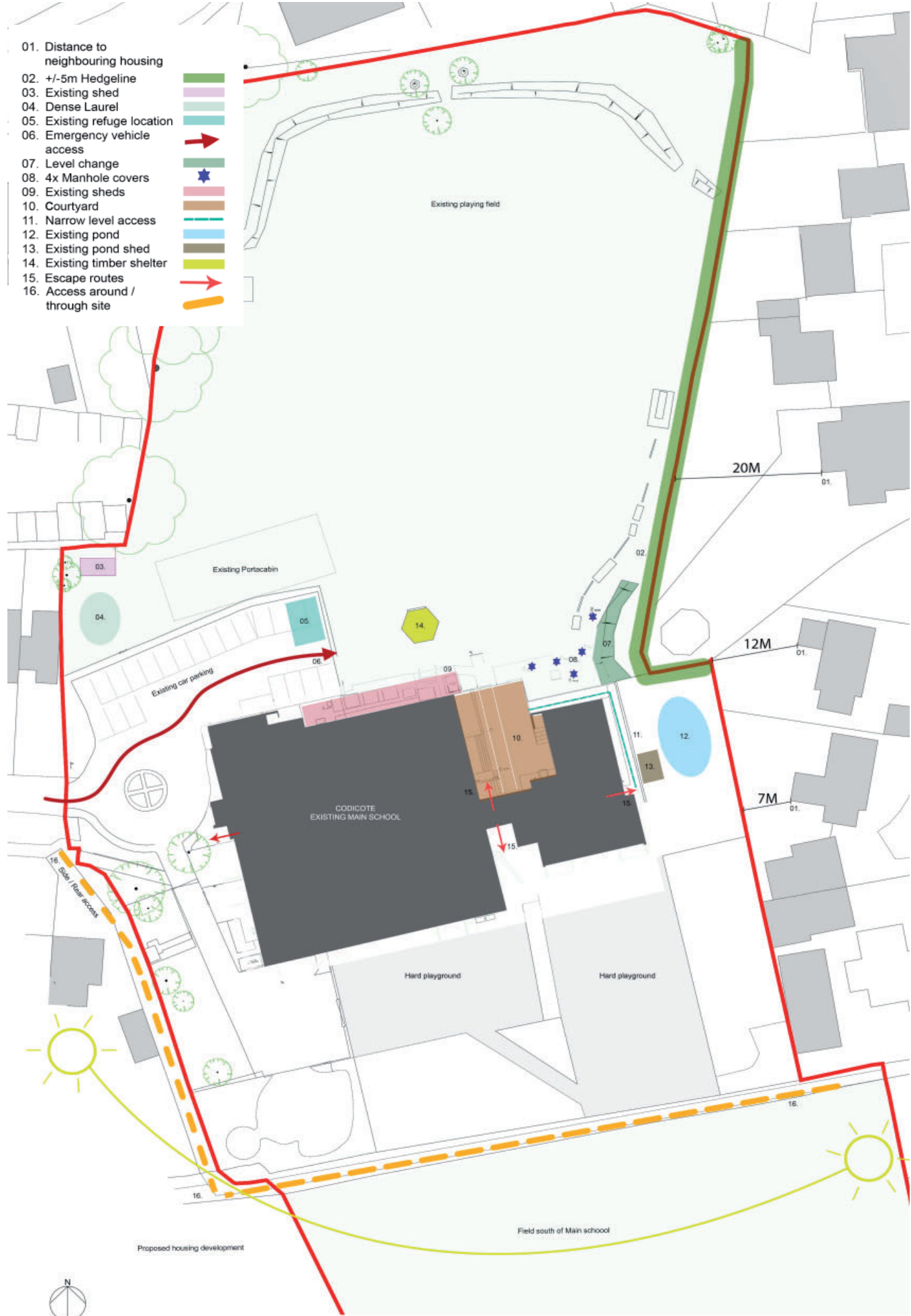


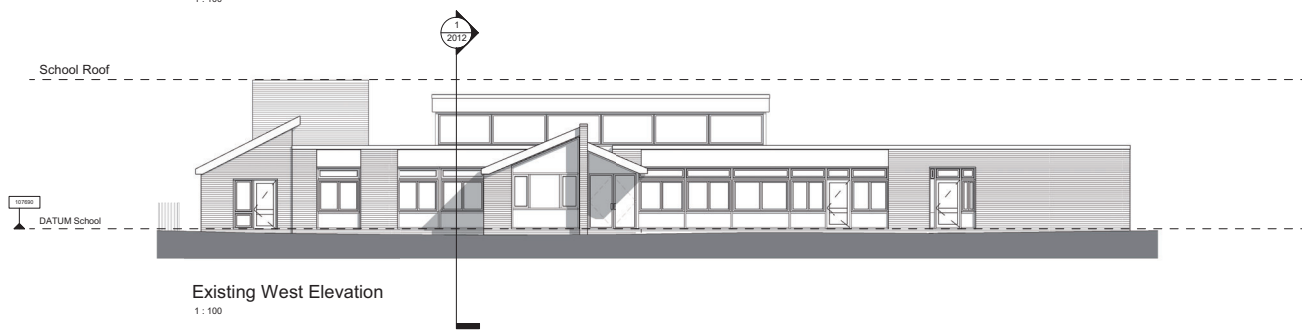
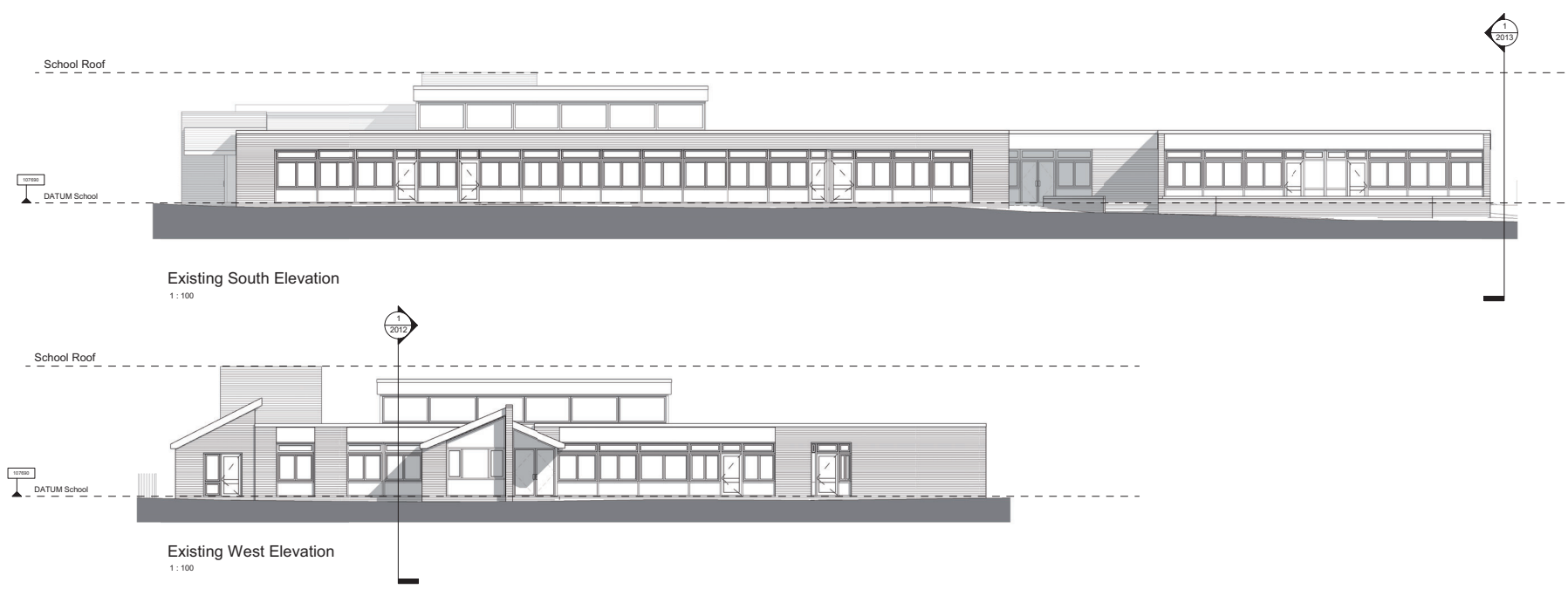
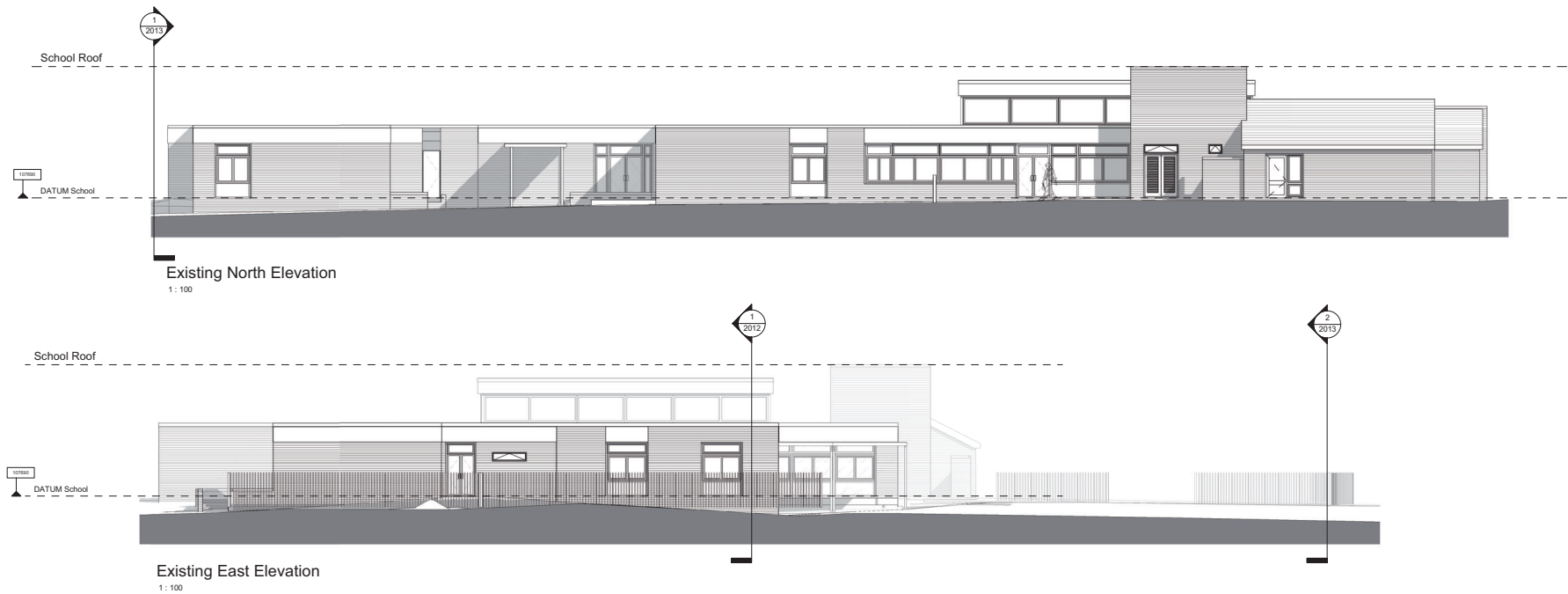
Site Plan - Land owned by development

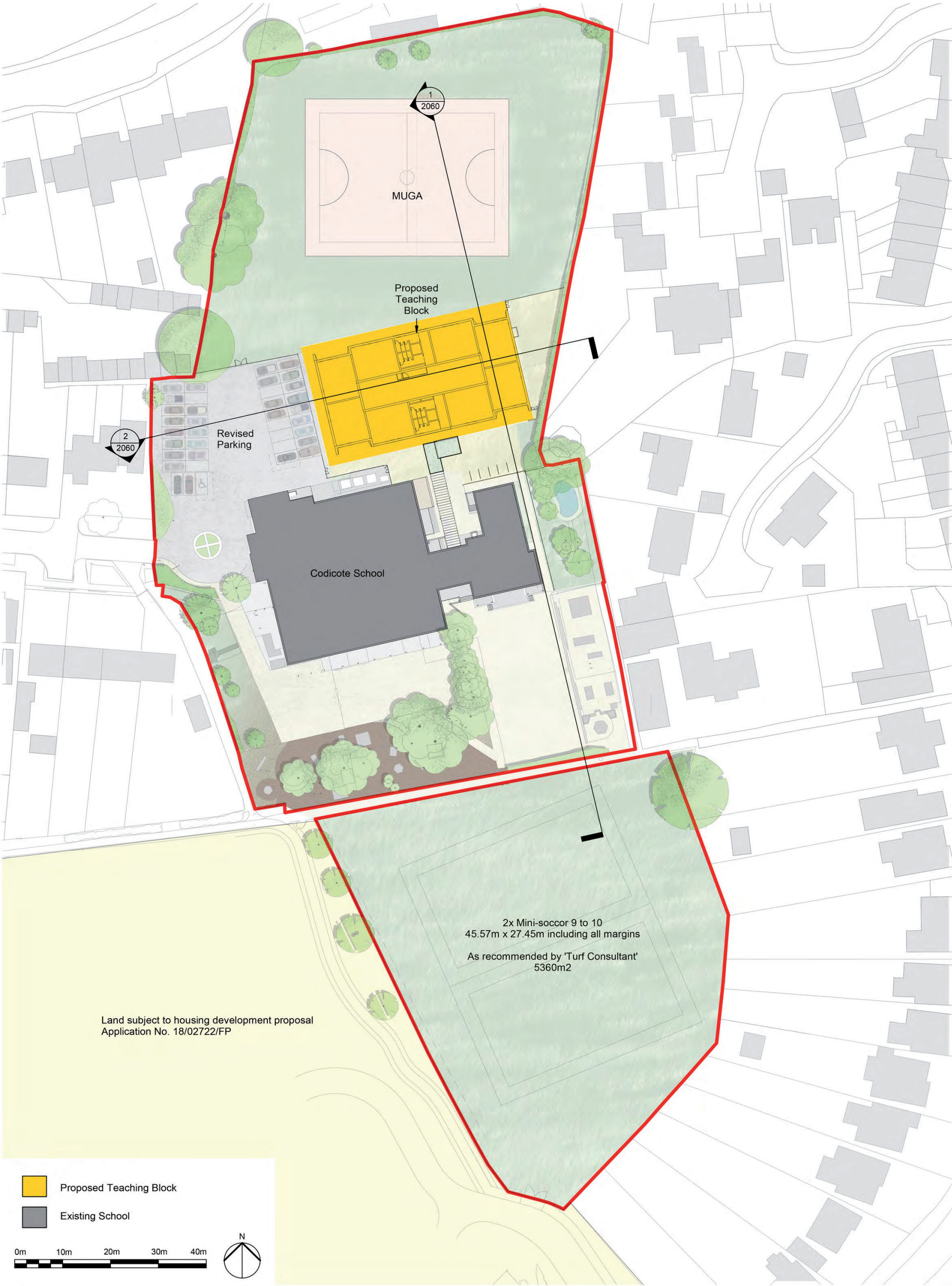


Site Plan - South field subject to S106

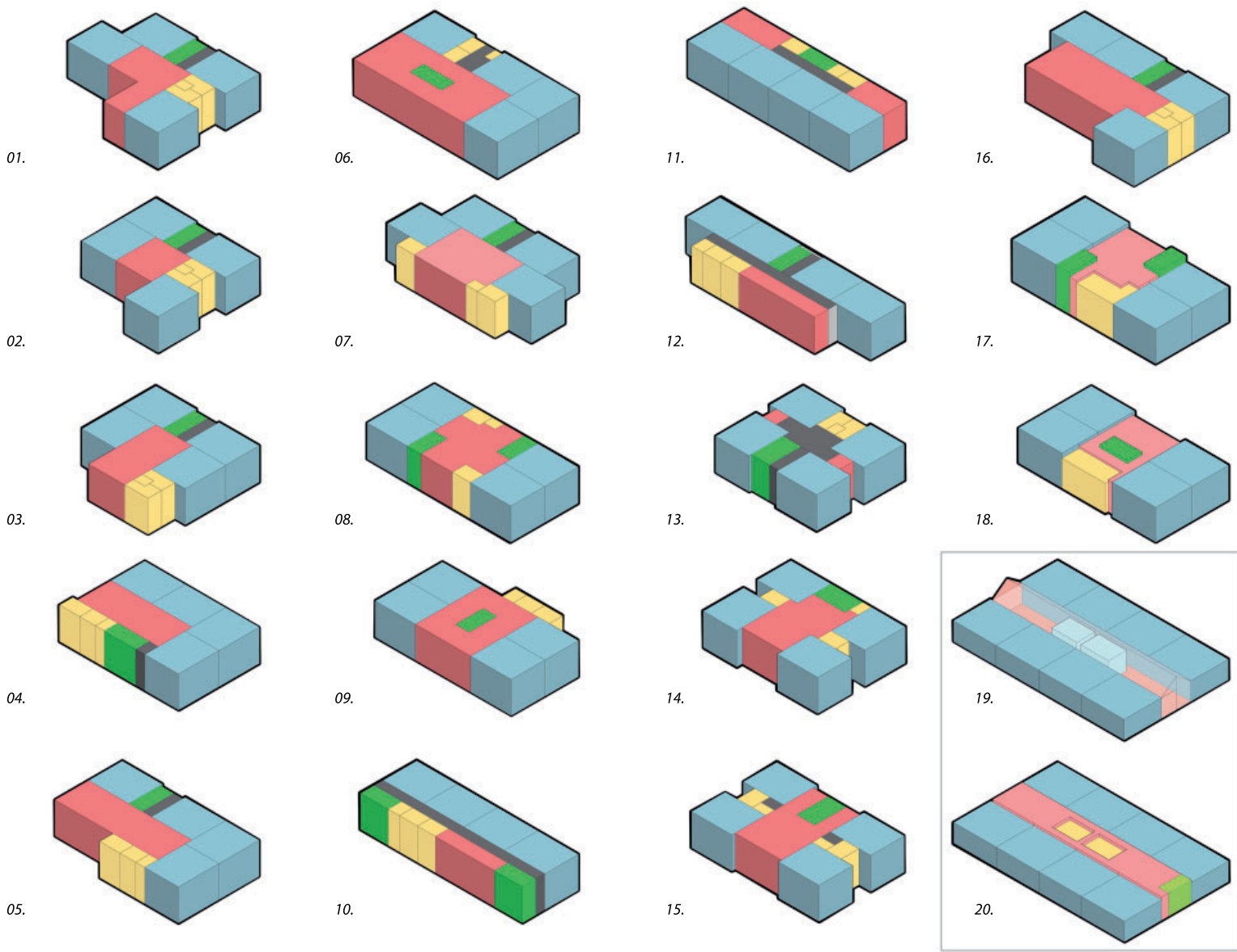


Opportunities and Constraints





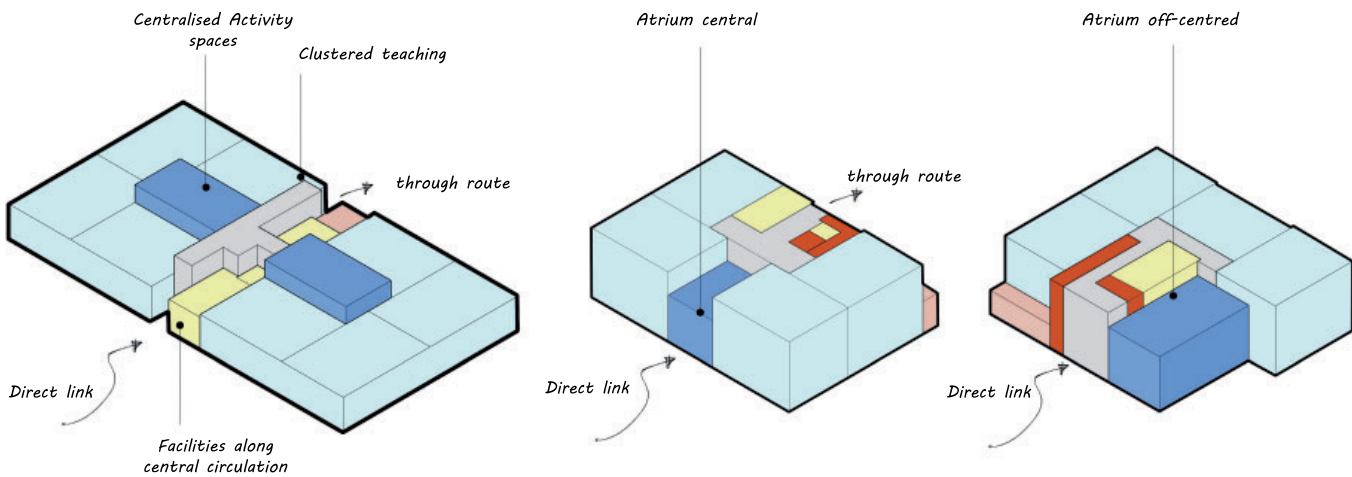
Proposed Site Plan



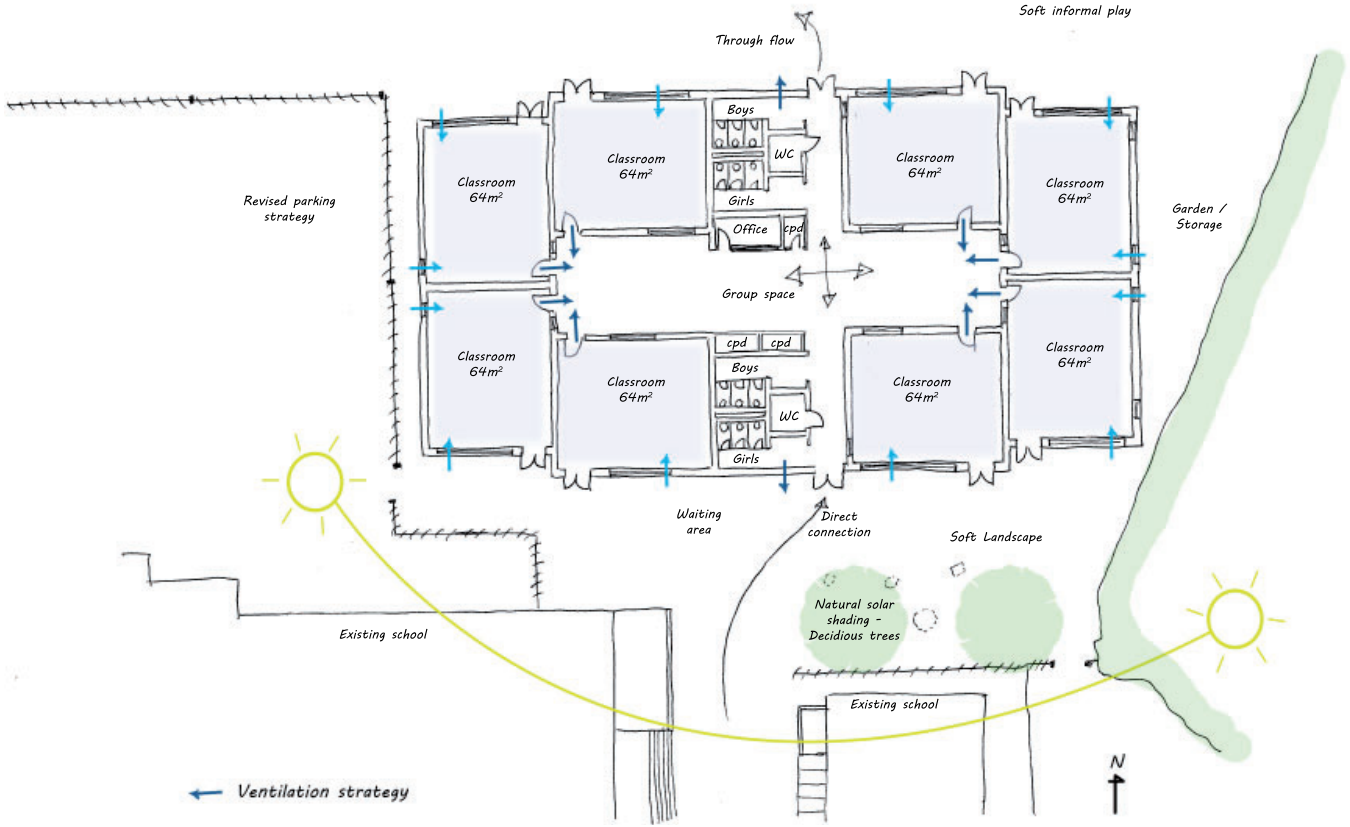
Design layout Exploration - 3D

*Single Storey Options

Development Stage 01

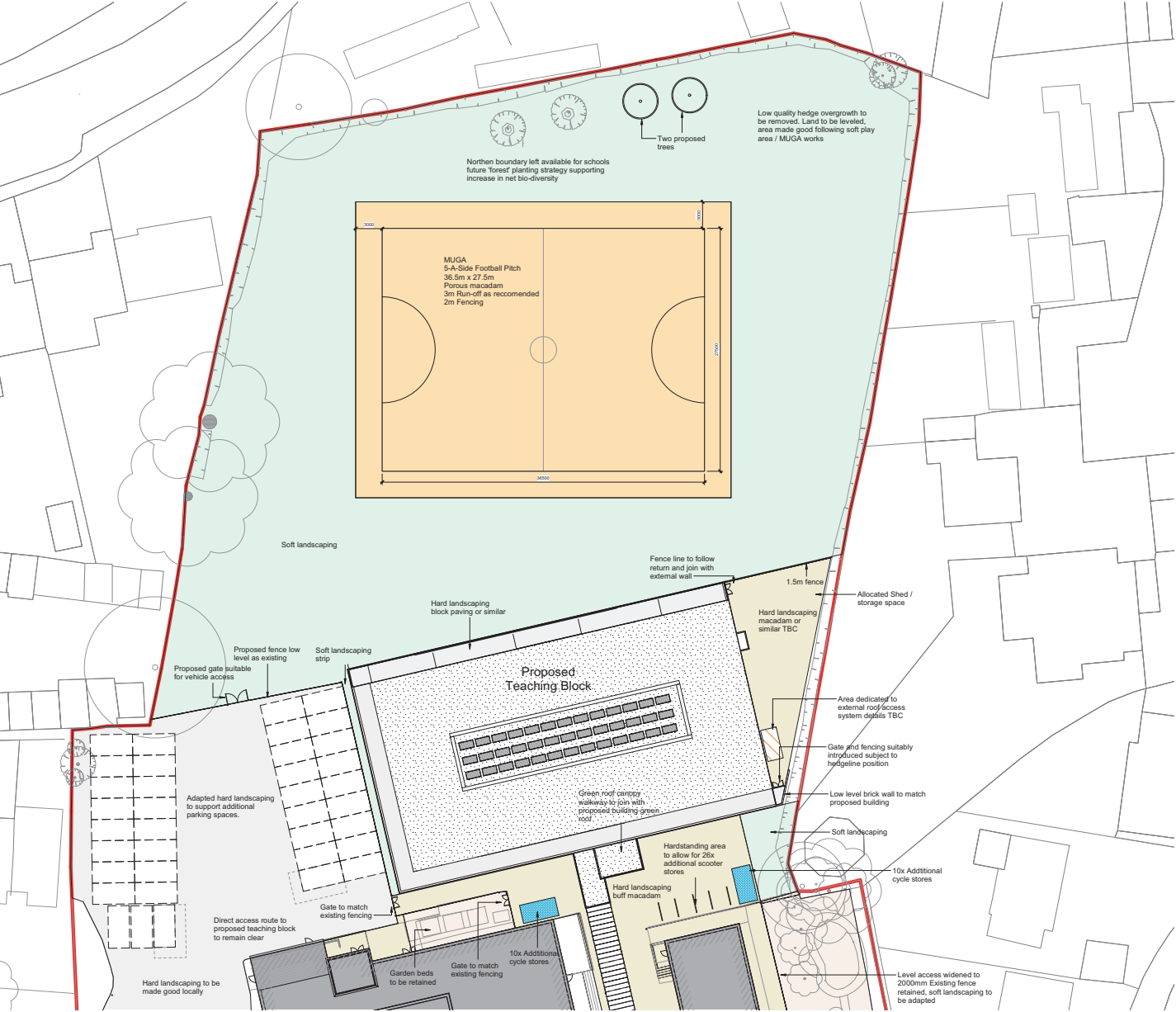


Development Stage 02

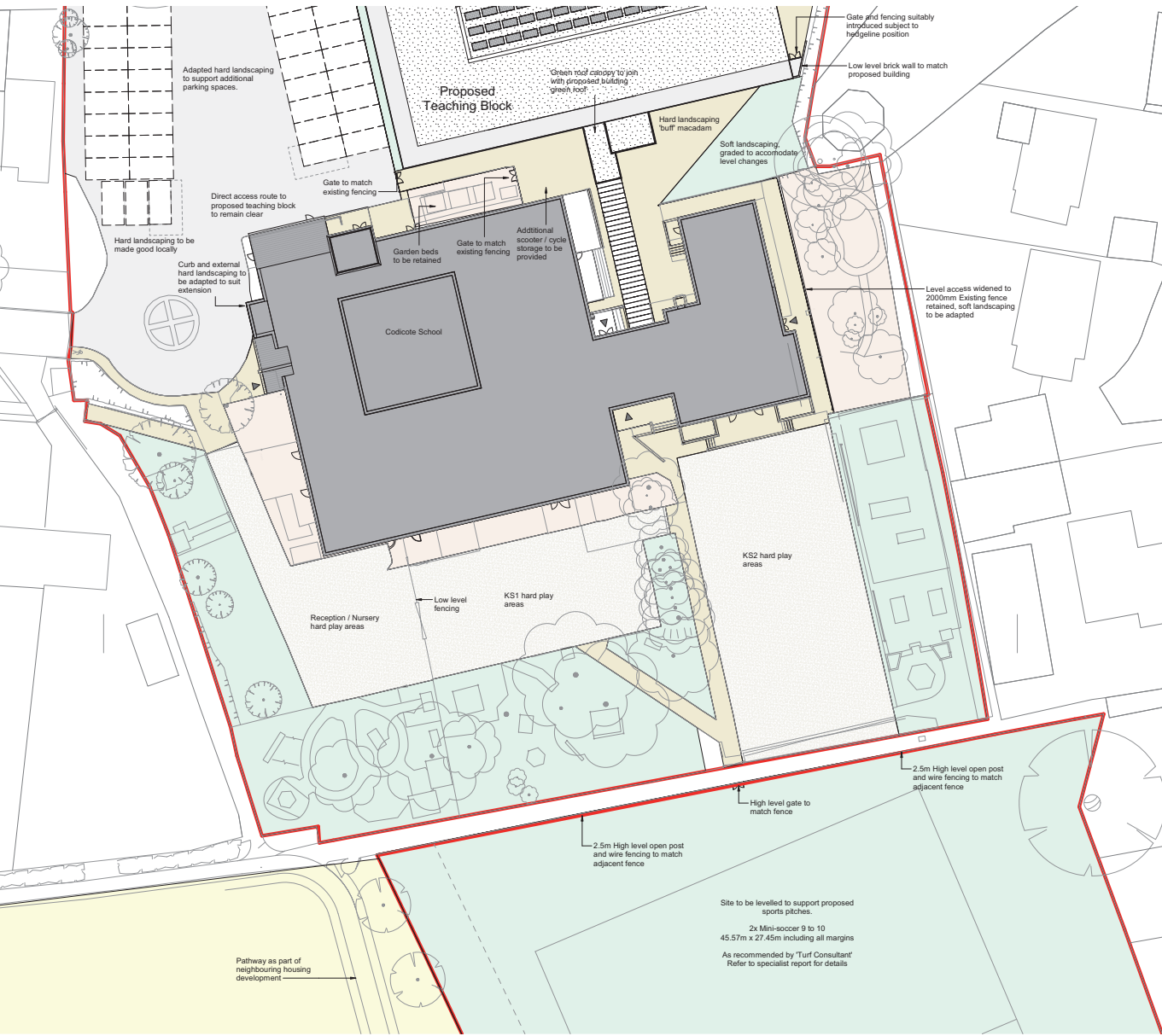


Development Stage 03

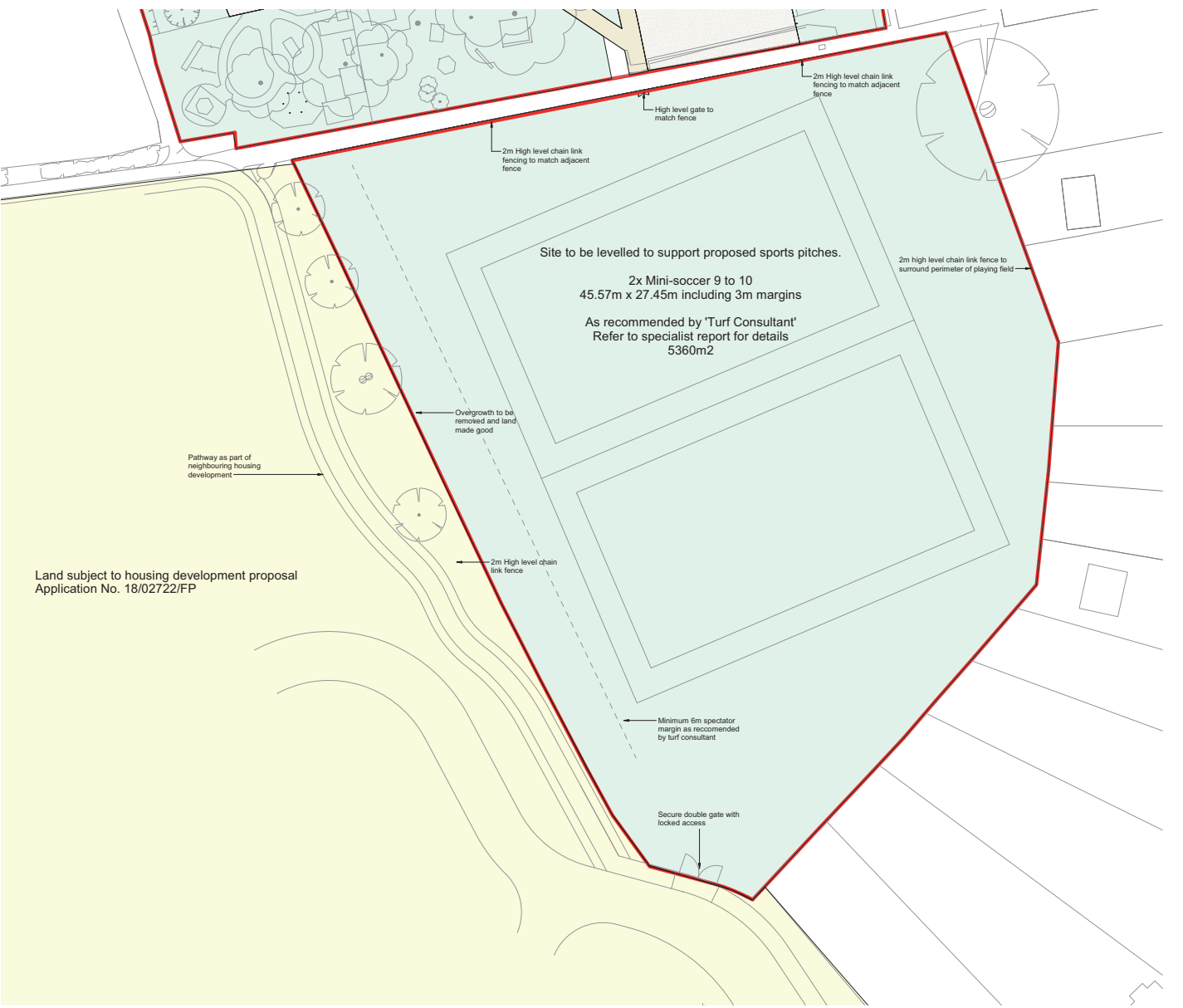
Codicote - Site Zoning & Southern field



Site Plan - Zone 1



Site Plan - Zone 2



Site Plan - Zone 3

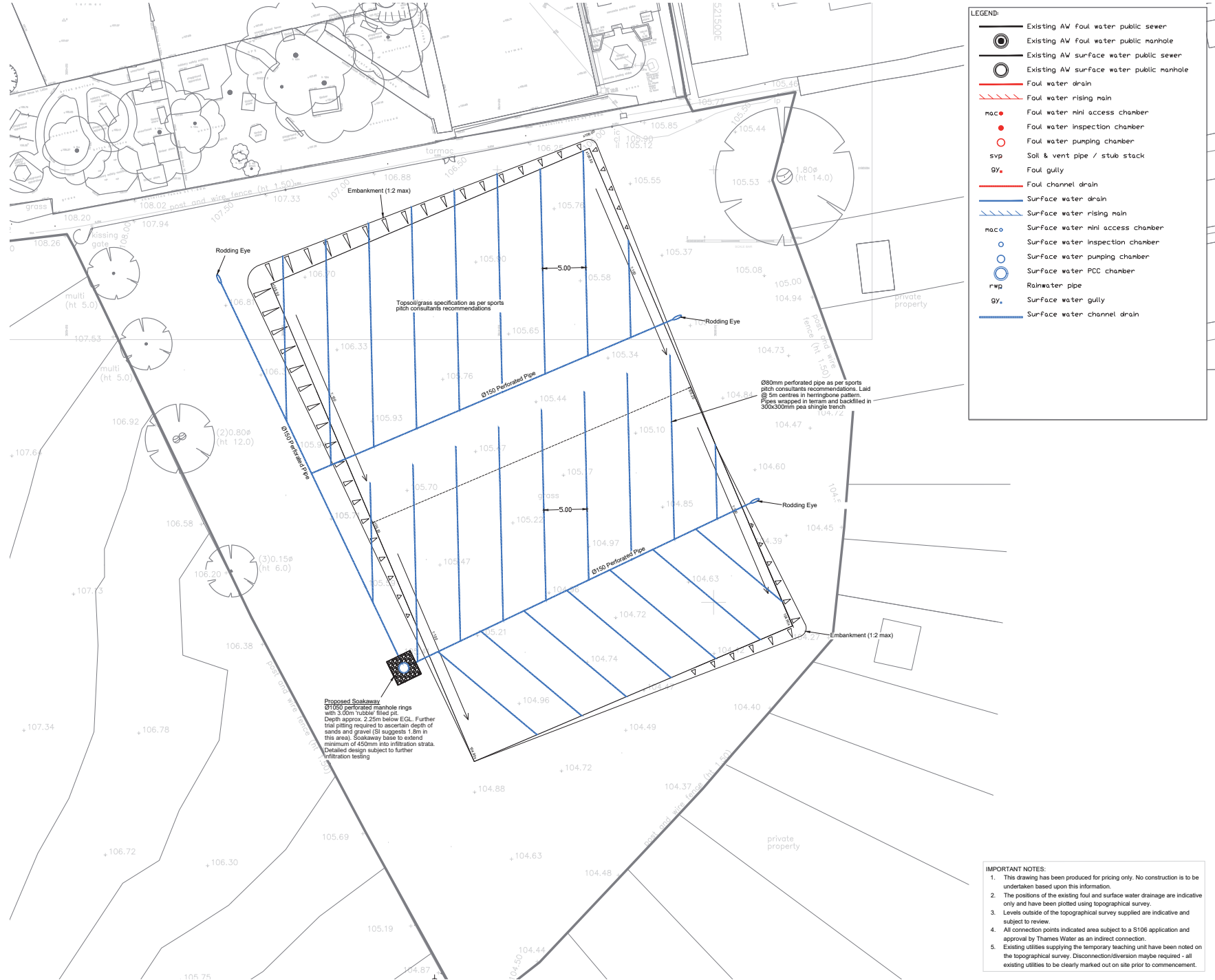
Field south of school

The existing cattle field located south of the main school is to be part of a Section 106 land agreement of which the school will take ownership of the field. The land will be developed into a new private playing field for the school providing high quality sports pitches. Studies have been undertaken for the piece of land with the field not suitable to act as a playing field in its current state. Works will be undertaken to bring this land up to a suitable standard for school use.

As the land sits at a slope the earth will be cut and filled to provide a level play area. The field will be supported by new seeding and the removal of any sharp objects/stones. The pitches will remain grass with sports marked out using line work, these will be for both summer and winter sports.

Civil engineering input has been undertaken supported by a turf consultant to develop the fields proposal, layout and strategies for implementing a successful sports field. The pitches will include a drainage strategy to avoid waterlogging maximising use all year round.

The newly acquired piece of land is larger than that of the new build teaching block therefore avoiding a negative loss of playing field. For security purposes the fields perimeter will contain high level ‘chainlink’ fencing or that of similar openness with controlled gated access at the north and southern corner of the site.



Codicote - Floor Plan Design

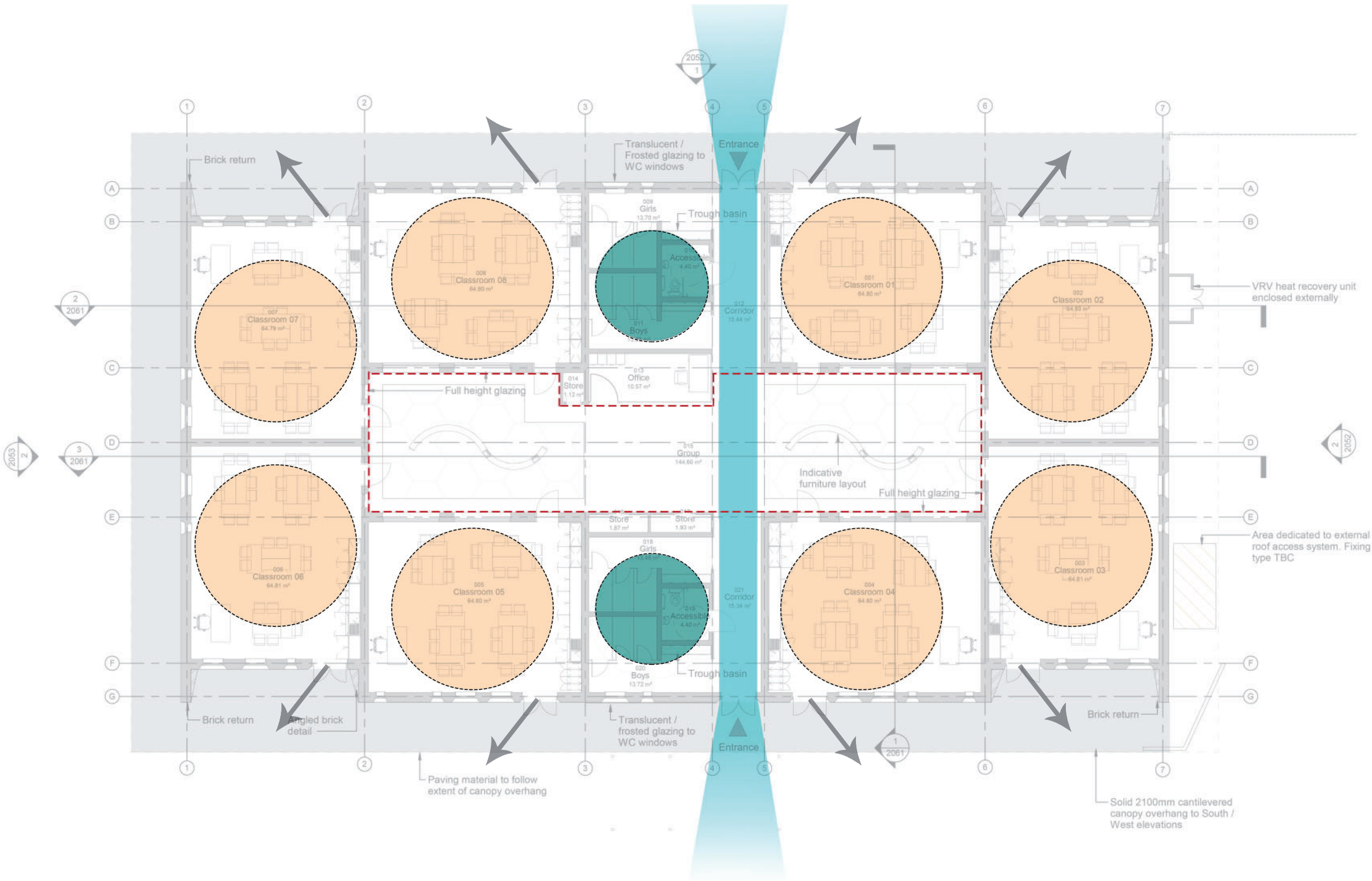
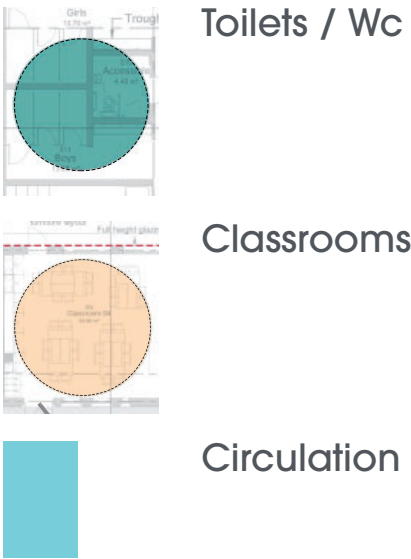
Floor plan

The Floor plan has been designed to retain a connection with the existing school whilst creating a continuous flow through the centre of the proposed. The classrooms have been strategically arranged to surround the central space, creating direct connections internally and direct escape outdoors. The Arrangement allows the maximum square meterage for a new teaching block to be met, minimising circulation space and re-providing this as usable teaching areas.

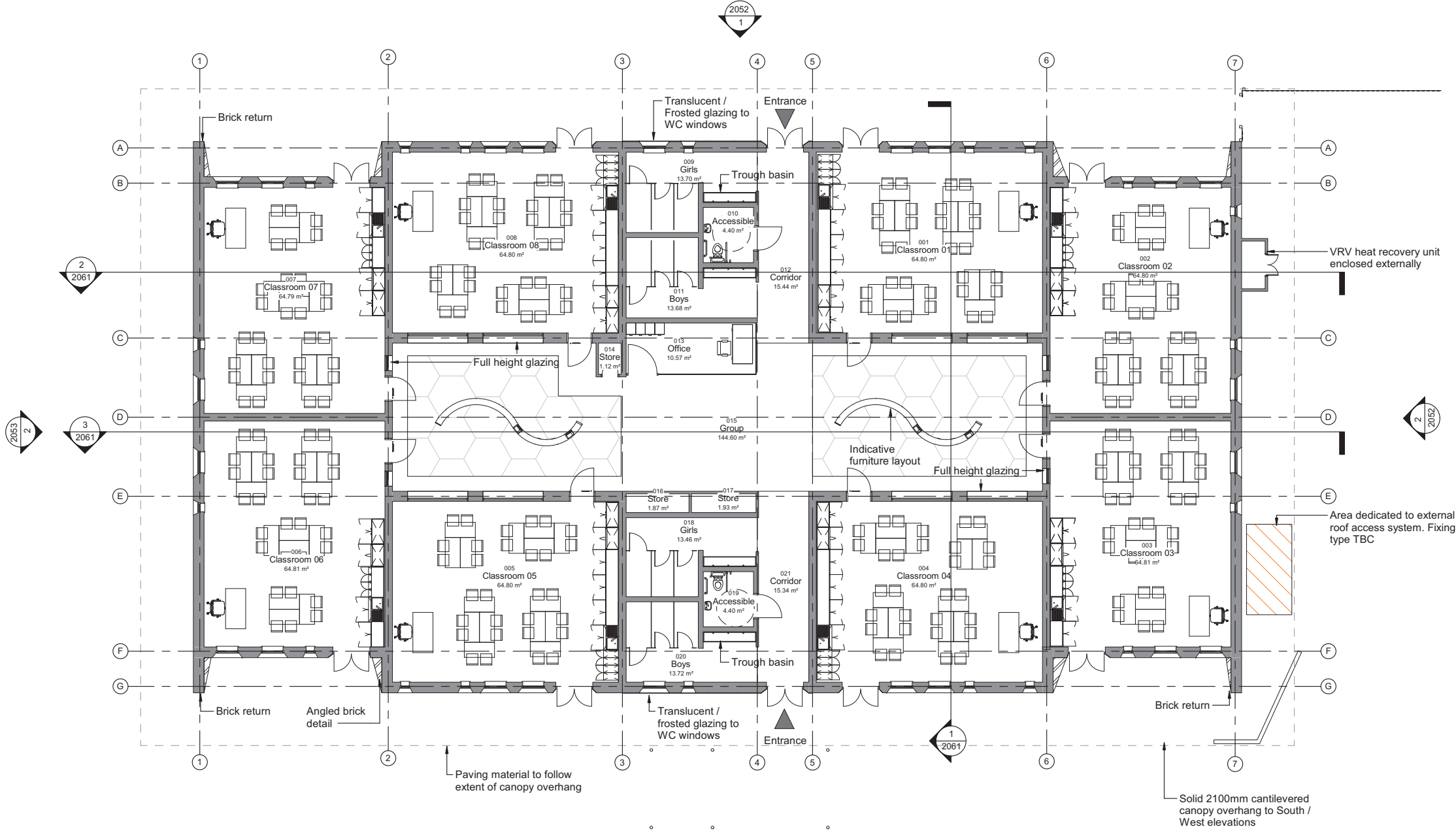
The central Atrium (within the dotted red line) is a double height space, providing volume and a flood of northern light. The space will be used for breakout teaching, library learning spaces and support an open environment with large internal windows.

Each classroom has been designed to a set size requirement supporting a 600x600 grid and rectangular in shape to suitable arrange furniture. Each class also allows a direct route from entrance to exit without passing across a room.

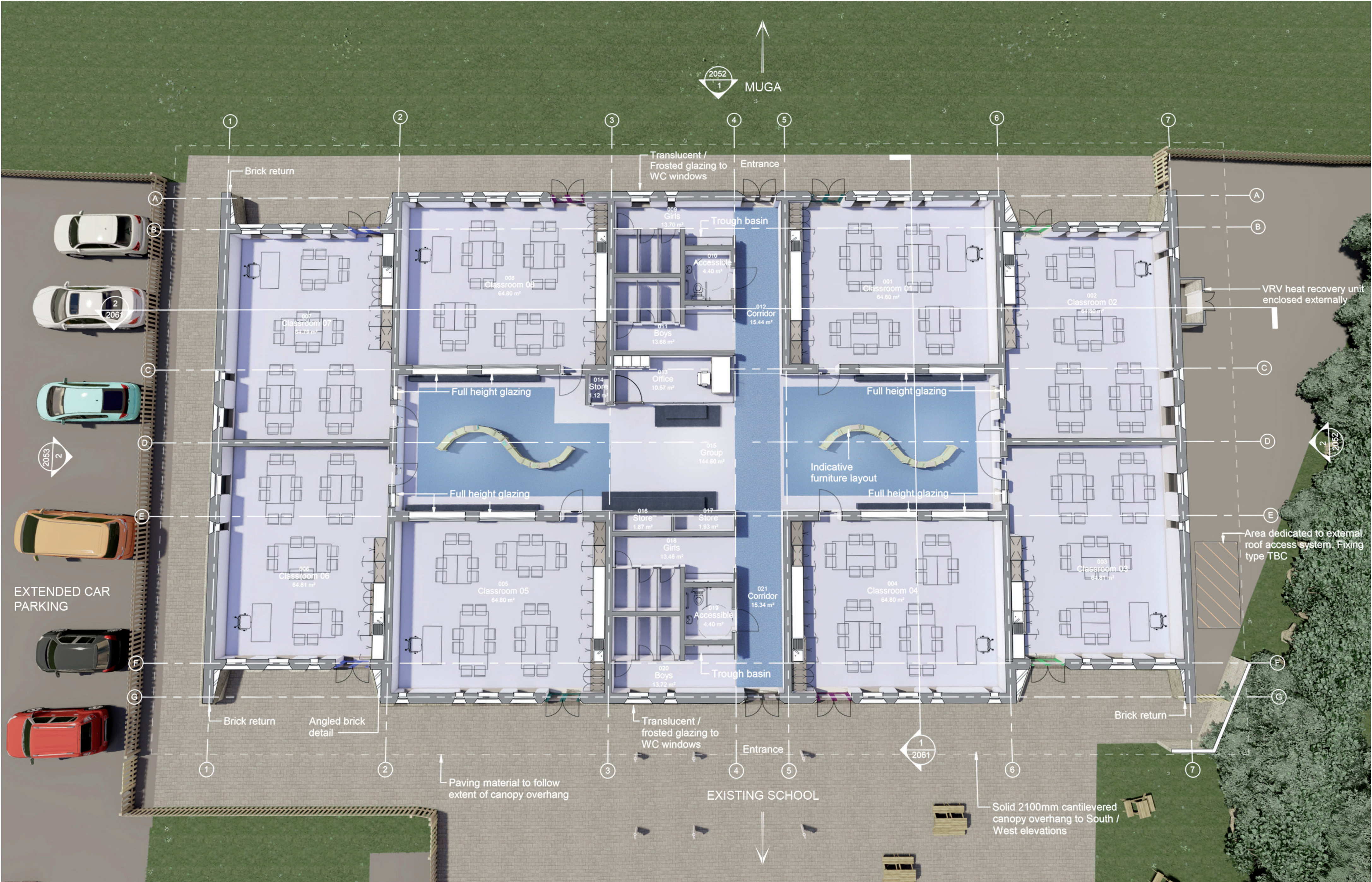
The toilets and Wc’s have been placed along the central corridor to promote hand washing and easy access, away from direct interaction with the main learning spaces.



Interior Visualisation



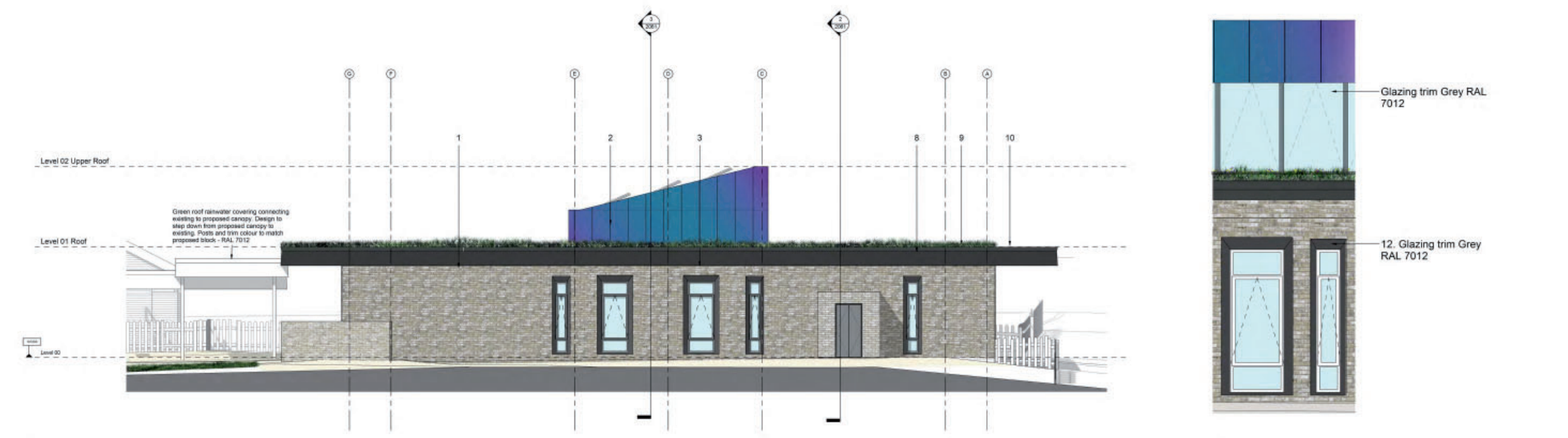
Ground Floor Plan



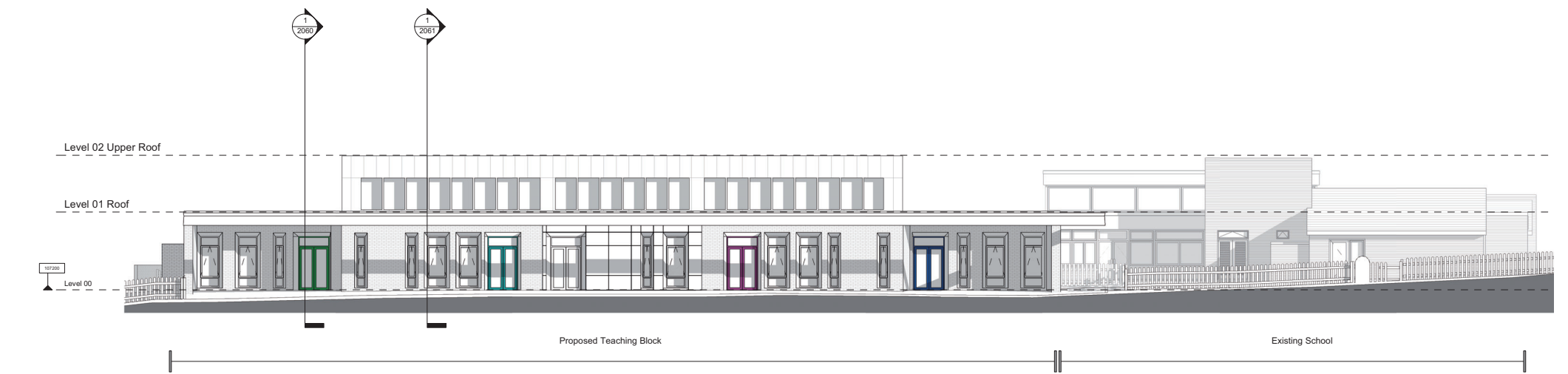
Codicote - Elevations & Sections



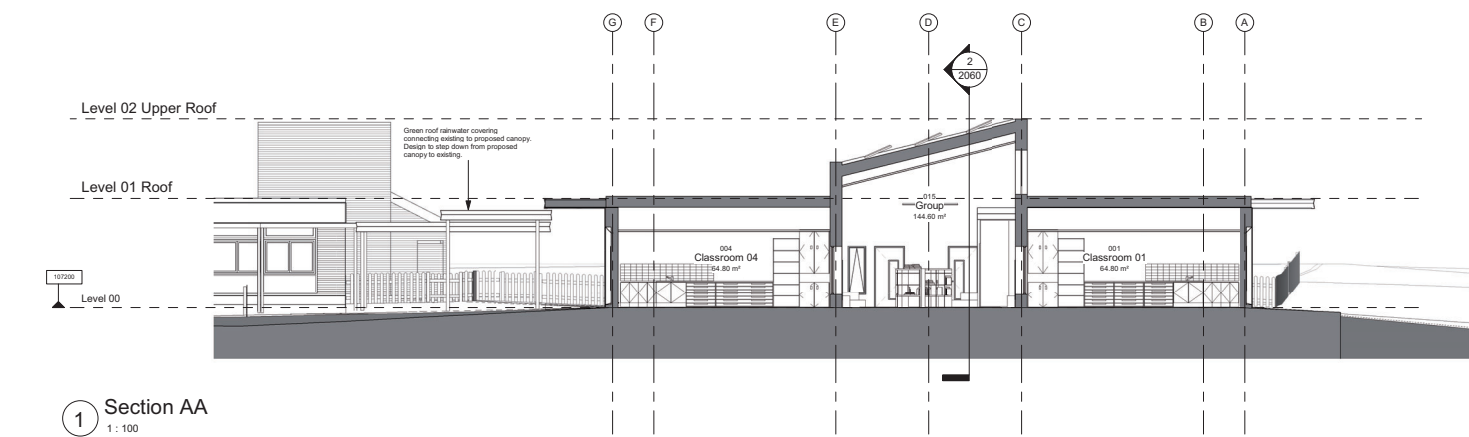
1 North Elevation
1:80



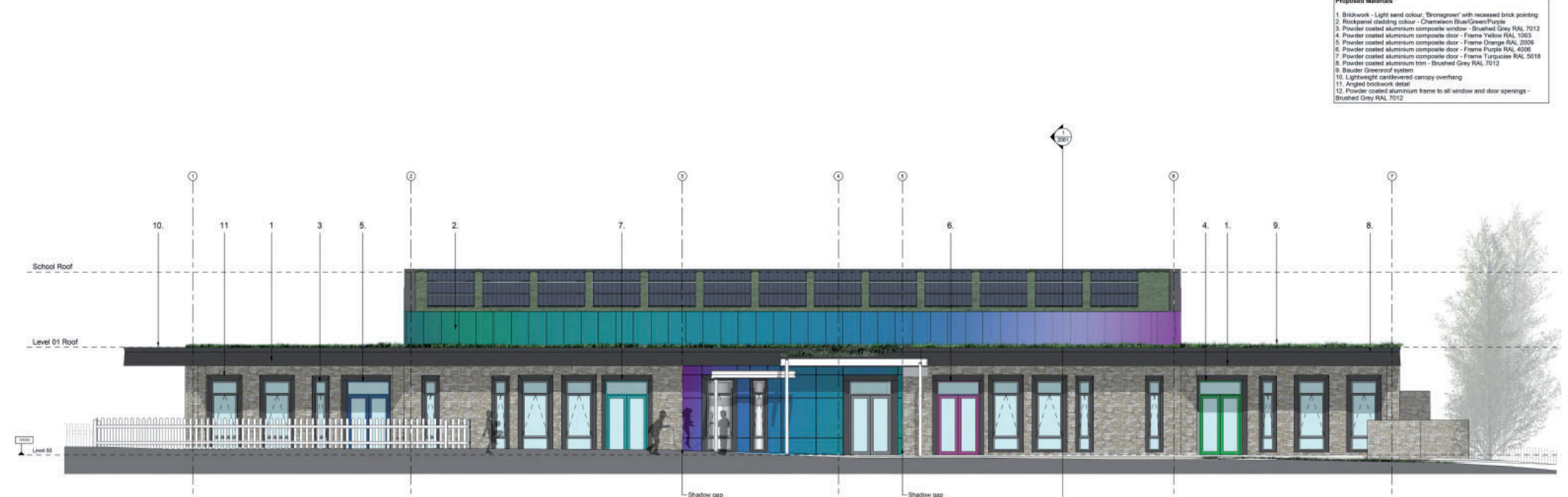
2 East Elevation
1:80



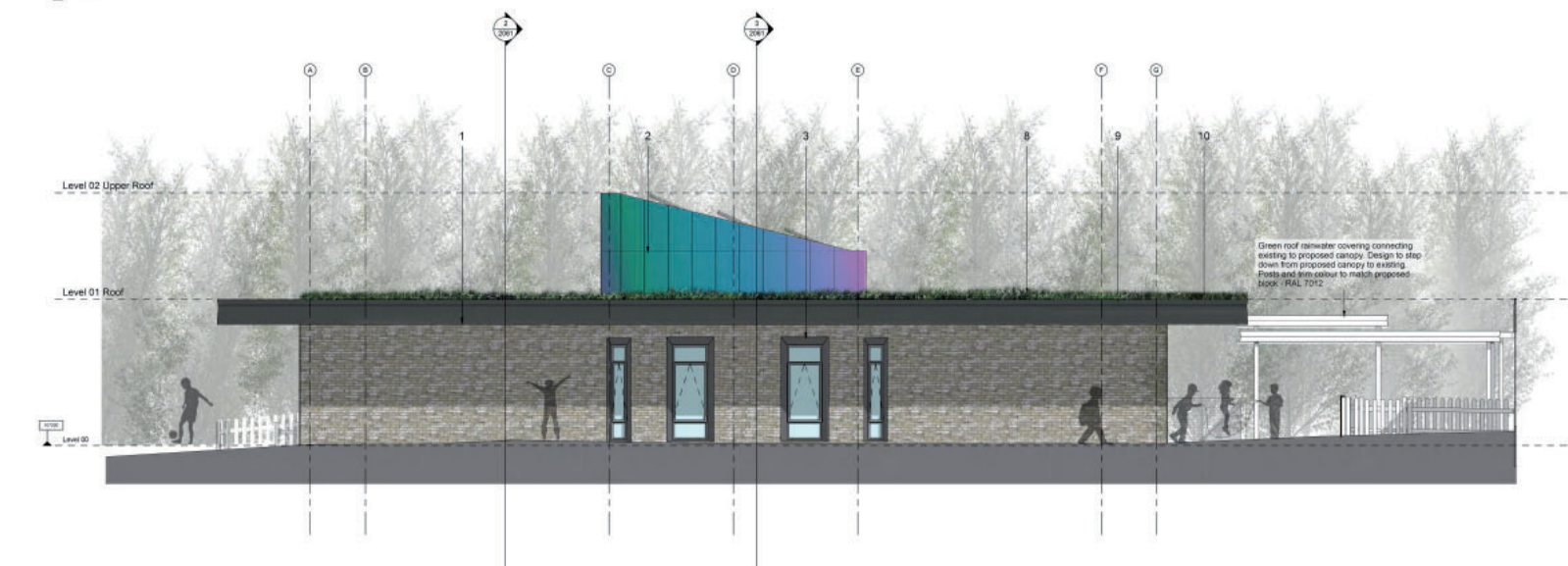
1 North Elevation
1:100



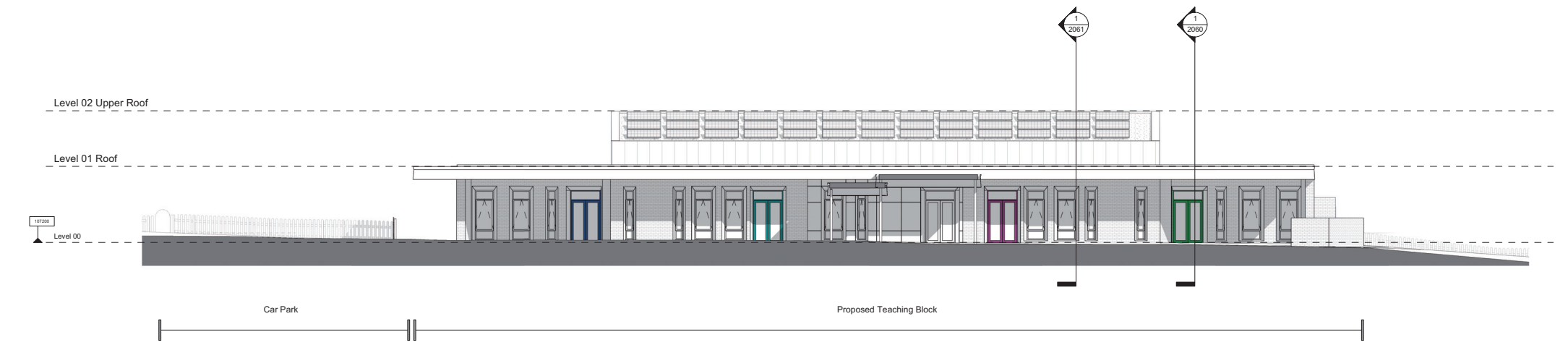
1 Section AA
1:100



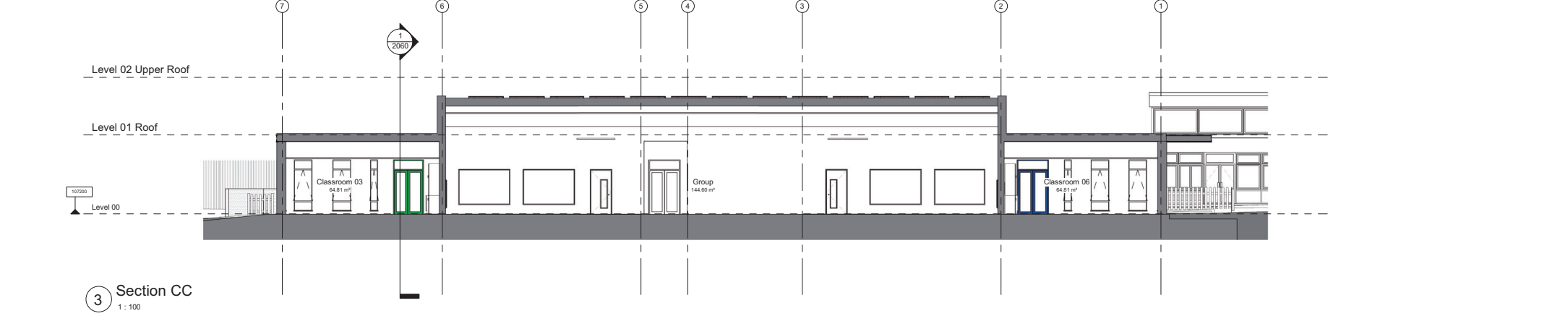
1 Proposed Block South Elevation
1:80



2 Proposed Block West Elevation
1:80



1 South Elevation
1:100



3 Section CC
1:100

Codicote - Design

The teaching block has been designed to remain considerate of its context. Evolving from a two-storey proposal to a single storey proposal. The scale remains consistent with the existing, lessening the impact on bordering neighbours and supported by its placement allowing a synergy with the current building.

Due to limiting the impact of scale we have been allowed to explore colour options an and focal points. As the centre of the building is designed to continue from the existing, through the proposed block and open towards the playing field it became important to emphasise this movement. An iridescent mix of greens, blues and purples begins at the building entrances and surrounds the atrium space in its middle.

The proposal uses a sandy brick to retain a ‘light’ and inviting feeling rather than an intrusive darker brick. The brickwork contains angled patterning in its returns supported by a grey trim around the openings. The ‘basalt grey’ colour combined with a slight inwards angle creates the feeling of depth in the windows and overall elevation without creating construction complications.

Surrounding the proposal, a canopy follows its perimeter. The canopy has been strategically designed to mitigate overheating from the south whilst on its northern face the canopy opens no longer being solid. This defining feature shall also provide cover when teaching outside creating an indoor/outdoor feel supported by quality paving.

Cladding visualisations show the full range of colours. Realistic application may appear more subtle.

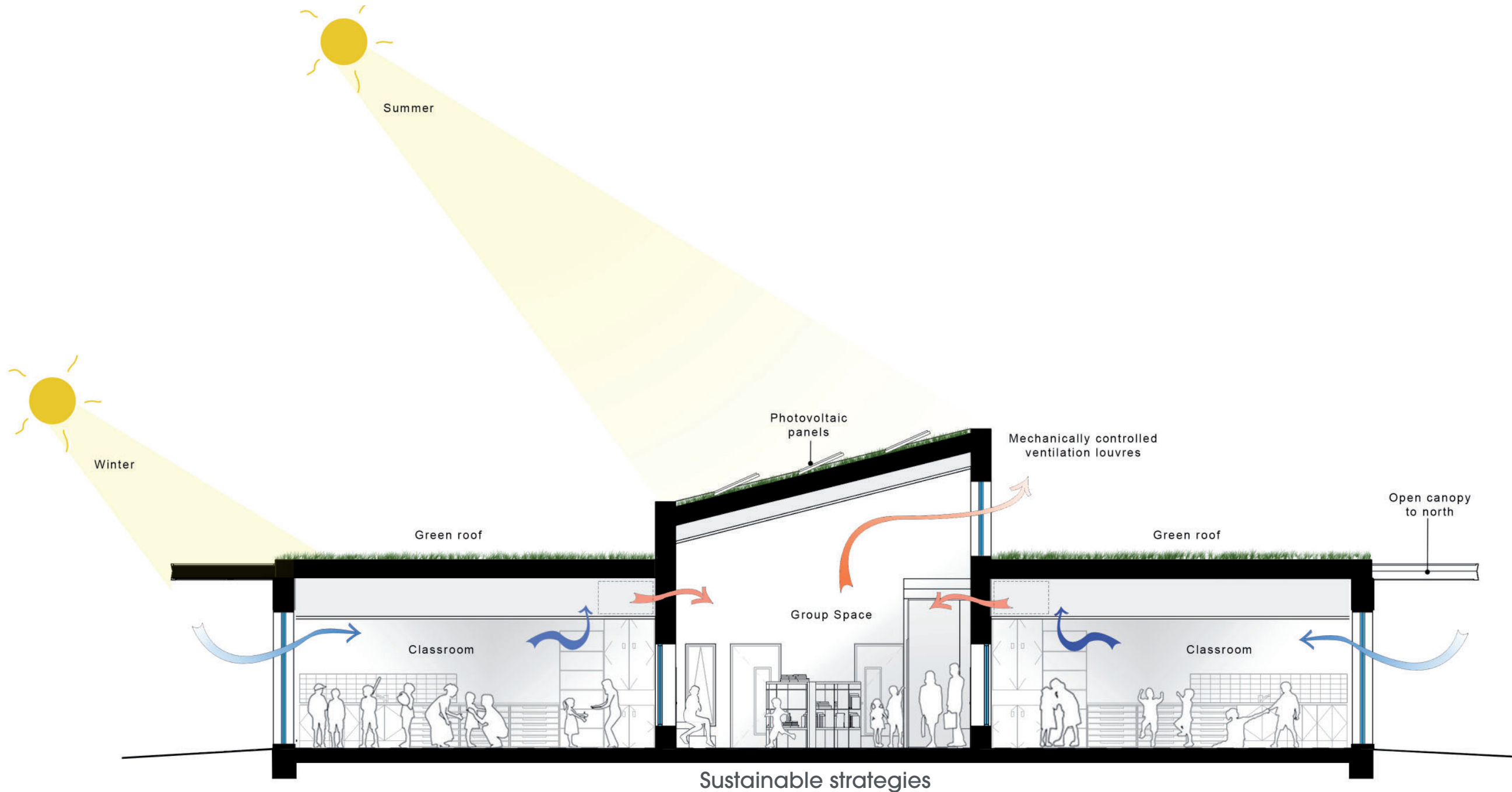


Codicote - Internal, Sustainability & Landscaping

The design shown is an early concept for interior finishes, indicatively showing colourful paintwork, feature walls and furniture. Within the centre of the proposal sits an atrium feeding from all classrooms and overlooked by a glazed office for maximum supervision. The central space can be multi-functional acting as a breakout space, library or private teaching areas depending on the furniture dynamics.

Being a double height space, the atrium is able to utilise north facing glazing whilst avoiding issues of overheating. The raised design combined with mechanical ventilation allows for consistent airflow to be pulled through the building and up out through the central windows. The orientation of the classrooms means that 4 of the 8 are north facing with little impact to overheating. The southern classrooms make use of the deep canopy shading windows in the high summer sun and maximise light in the low winter sun.

Surrounding the building will be a high-quality paving landscape to retain a level of material quality. The hard landscaping will contain cycle and scooter stores and be used as a waiting area for parents. Existing table furniture can be placed on the hard and soft landscaping providing space for lunchtime use.



Existing Site Landscaping



Proposed Landscaping

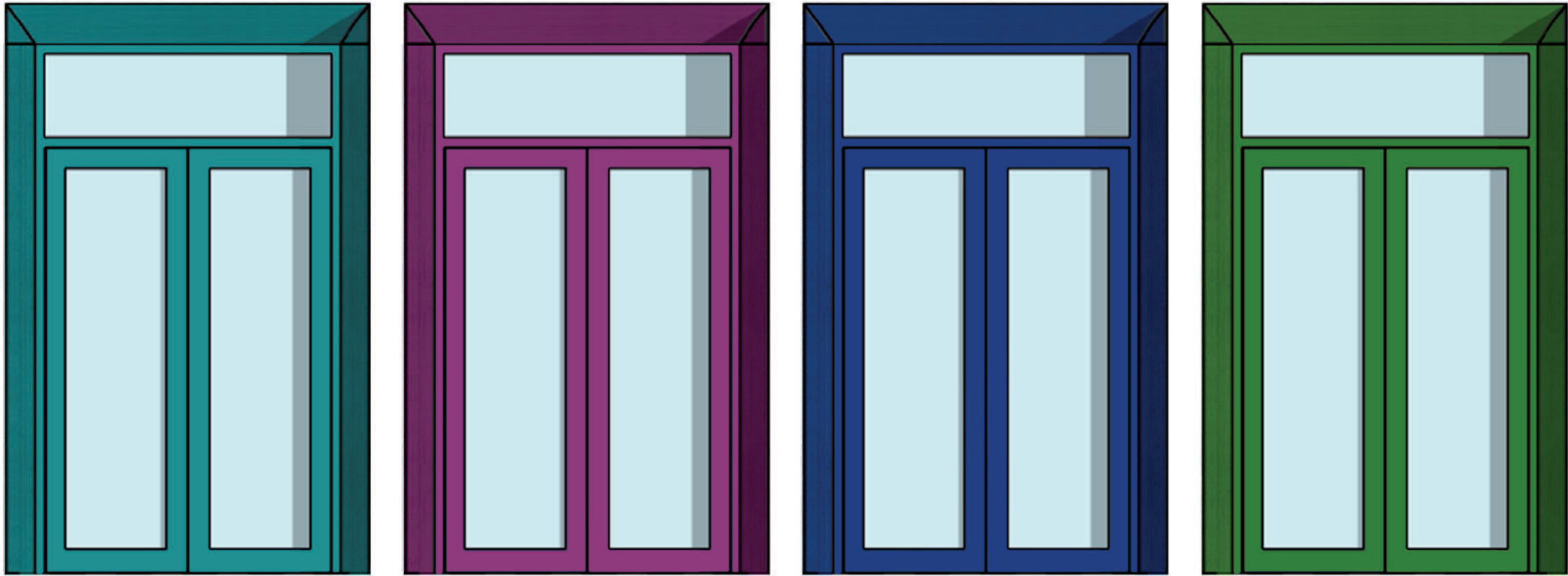
Codicote - Materials



Bronsgroen - Brickwork



'Basalt Grey' - Trim

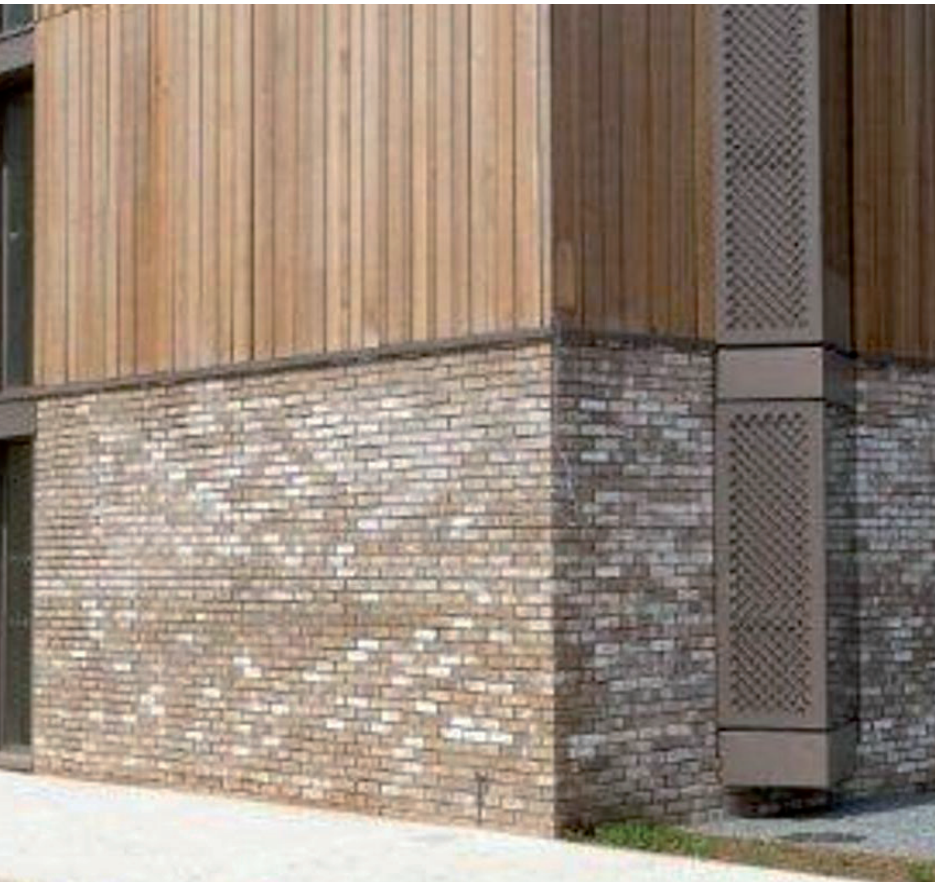


Turquoise Blue

Traffic Purple

Ultramarine Blue

Pure Green



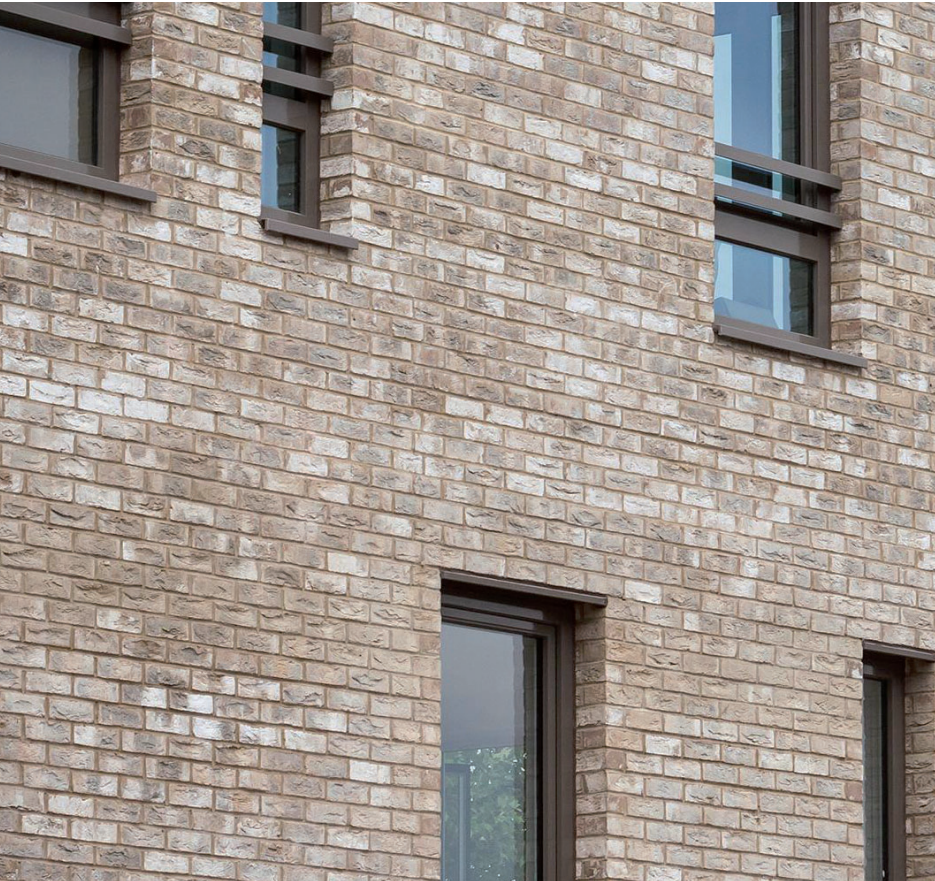
Bronsgroen - Precedent



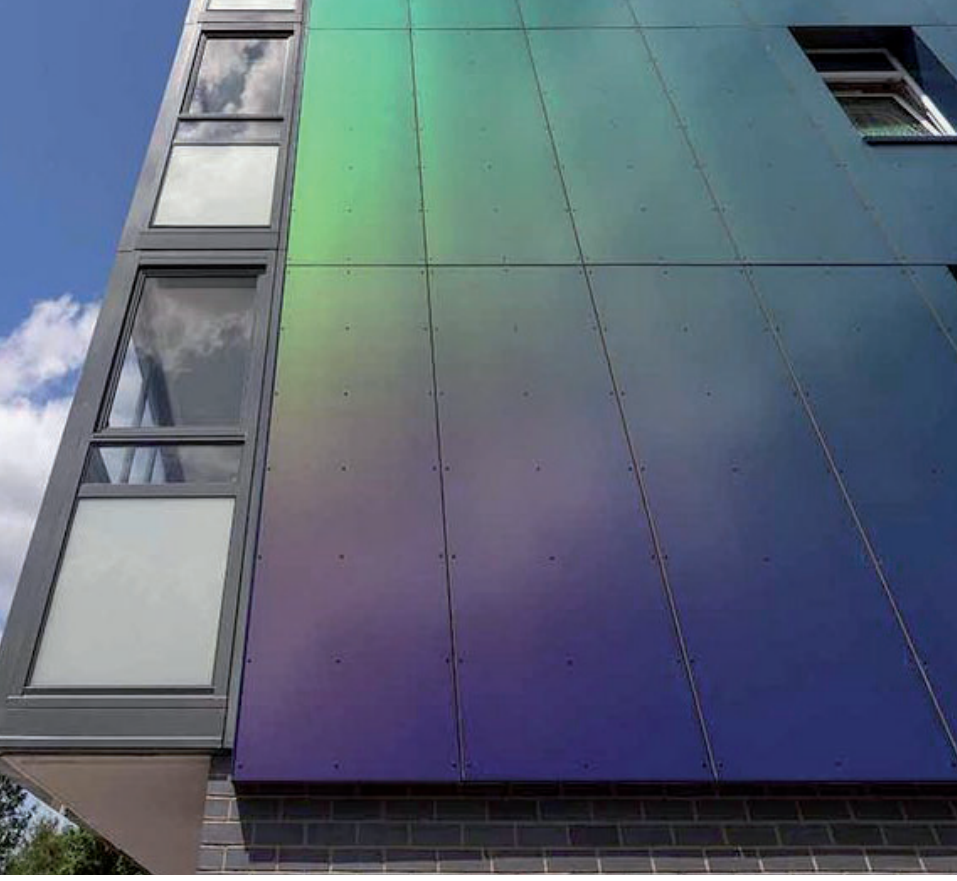
Chameleon Cladding - Rockpanel



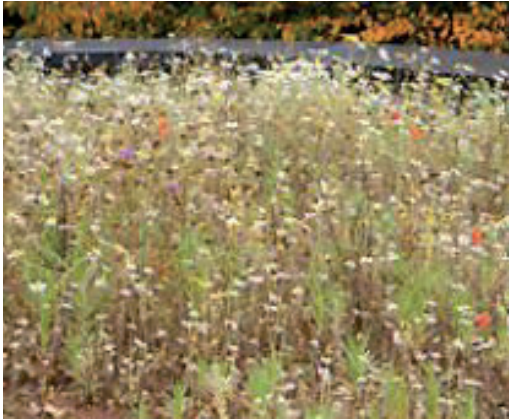
Primary School in Loiano - Precedent



Codicote Primary School
Hertfordshire County Council



Chameleon - Precedent



Seedum / Wildflower Green roof

Green Roof

The proposal is not only for educational use but will serve as an educating building in itself. The design will utilise a visible green roof, covered in wild-flower and low-level sedum planting as a bio-diverse blanket. The planting will be low maintenance, allowing a natural integration into the context and playing field. A green roof will allow a harmonious blending of the new building into the playing field landscape another vital element to minimising the impact on local neighbours.

Classroom Doors

Classroom doors have been designed with four different colours with one of each colour on either side of the building. The idea is to support colour association for each child and their own classroom sparking playground conversation to which 'colour' class they belong to. The colours have been chosen by the school with great consideration to the proposed cladding and the overall design.